

# KANSAS CITY, MISSOURI

## Profile Sheet

### ITINERARY IDEAS

#### *Beer, Baseball and Music – America's greatest pastimes*

**SUGGESTED SITES** American Jazz Museum, Boulevard Brewing Co., Negro Leagues Baseball Museum and the Kansas City Royals at Kauffman Stadium. Continue on in St. Louis for related sites.

#### *Pioneers & Presidents – The heart of American history*

**SUGGESTED SITES** Harry S. Truman Library & Museum, National Frontier Trails Museum, Arabia Steamboat Museum and more, including additional Western heritage sites in Kansas and Oklahoma



#### *Outlaws & Legends – Follow in their footsteps*

**SUGGESTED SITES** Jesse James Farm Museum, Jesse James Bank Museum, Union Station, Kansas City Gangster Tour and Tom's Town Distilling Co.

#### *Five Courses for Foodies – A Midwestern culinary capital*

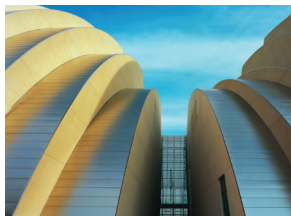
**SUGGESTED SITES** Kansas City barbecue, Christopher Elbow Artisanal Chocolates, Lidia's Kansas City, The Local Pig and Manifesto speakeasy

#### *Made in KC – Products from the Heartland*

**SUGGESTED SITES** Hallmark Visitors Center, The Roasterie Coffee factory, Strawberry Hill Poviticia Company, Tom's Town Distillery and Boulevard Brewing Co.

#### *America's Creative Crossroads – Kansas City's arts and culture*

**SUGGESTED SITES** Crossroads Arts District, Kauffman Center for the Performing Arts, Hallmark Visitors Center, Thomas Hart Benton Home & Studio and more



### FAST FACTS

- 2.1 million people (MSA)
- America's most centrally located major metropolitan area
- Known for tangy barbecue, sultry jazz and beautiful fountains

### HOTELS

- 32,000 rooms in the KC metro
- 3,500 rooms available Downtown
- Major brands represented: Marriott, Loews, Hilton, Westin, Sheraton, Crowne Plaza, Courtyard Inn and many boutique hoteliers



### TOP 10 ATTRACTIONS

- 18th & Vine Historic Jazz District: American Jazz Museum and Negro Leagues Baseball Museum
- Jesse James Farm Museum
- Kansas City Barbecue
- National World War I Museum and Memorial
- Country Club Plaza
- Arabia Steamboat Museum
- National Frontier Trails Museum
- National Museum of Toys and Miniatures
- KC Gangster Tour
- Jazz Clubs



**VisitKC.com/Groups**

**Your Contacts in KC**

Group tour assistance: **Jenny Wilson** – [jwilson@visitkc.com](mailto:jwilson@visitkc.com), 816-935-3366

"A hot destination in the heart of the continent"  
– Yahoo!



## AIRLINES SERVING THE KANSAS CITY AREA

Aeroméxico/Funjet  
Air Canada  
Alaska Airlines  
Allegiant Airlines  
American Airlines  
Delta Airlines  
Frontier Airlines  
Icelandair  
Seaport Airlines  
Southwest Airlines  
Spirit Airlines  
United Airlines

## DISTANCE DRIVING TO THE KANSAS CITY AREA

Seattle - 1,500 mi  
San Francisco - 1,500 mi  
Los Angeles - 1,300 mi  
Miami - 1,240 mi  
Las Vegas - 1,140 mi  
New York - 1,095 mi  
Phoenix - 1,045 mi  
Philadelphia - 1,040 mi  
Charlotte - 960 mi  
Washington, DC - 945 mi  
Salt Lake City - 925 mi  
New Orleans - 845 mi  
Albuquerque - 720 mi  
Atlanta - 675 mi  
Denver - 560 mi  
Minneapolis - 450 mi  
Dallas - 450 mi  
Chicago - 450 mi

